

Technical Document

Revision 0.0

November, 2008

PLC Connection Guide

TN508D

IDEC FC4A/FC5A 與 PanelMaster HMI 之間的通訊設定



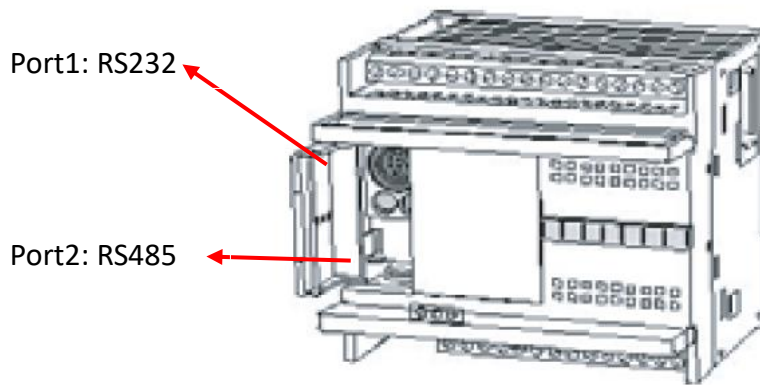
Designed to be Outstanding

©Revision Record

Revision	Date	Content	Owner

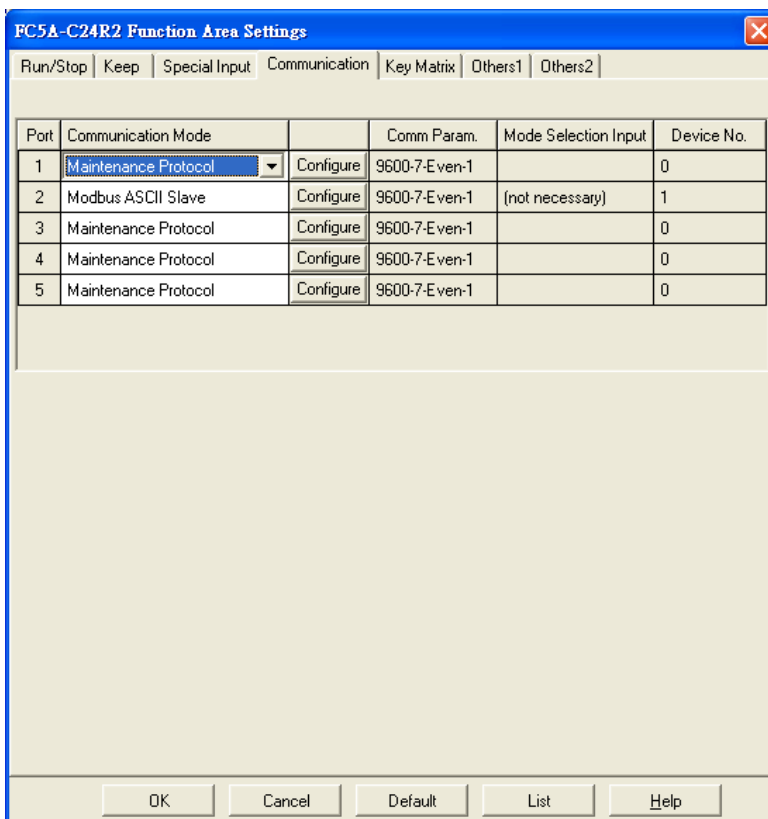
前言

此技術文件介紹將 IDEC FC4A/FC5A PLC 連接 PanelMaster HMI。

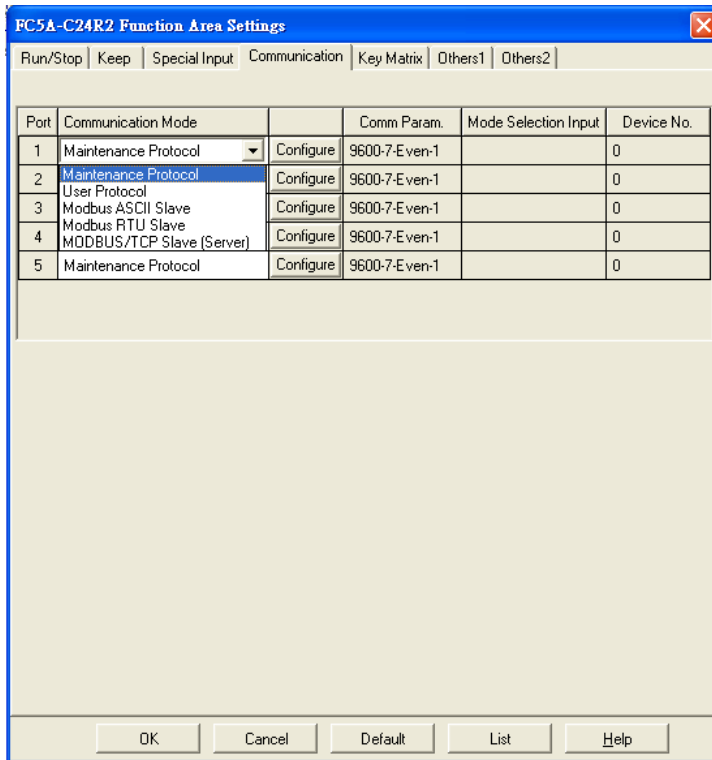


(1) PLC 參數設定:

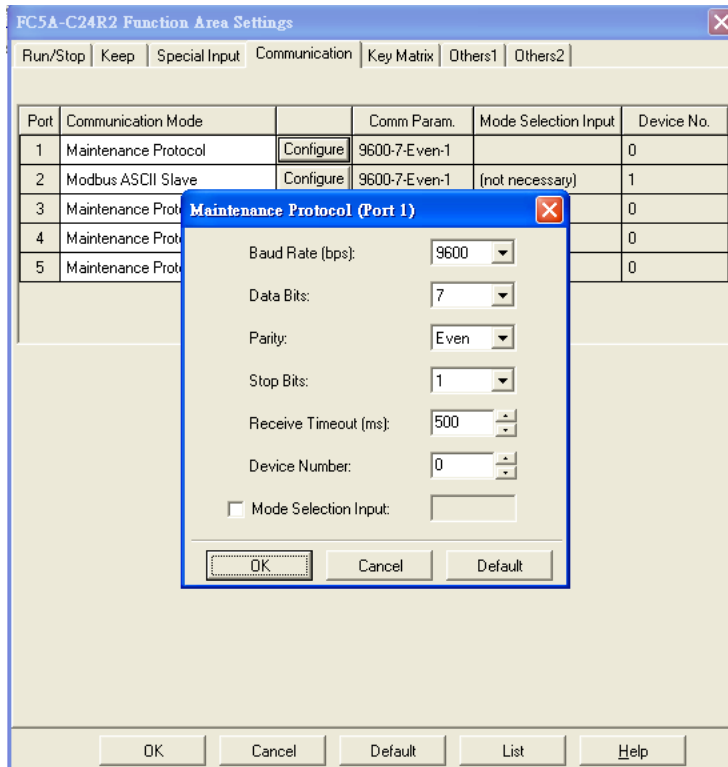
- (a)使用 WINDLDR 軟體連接 PLC 通過 RS232 編程纜線，點選 menu “Configure” -> “Function Area Settings...”。您可以藉由 PLC 模組 “FC5A-C24R2” 來定義 5 個通信端口。



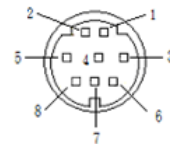
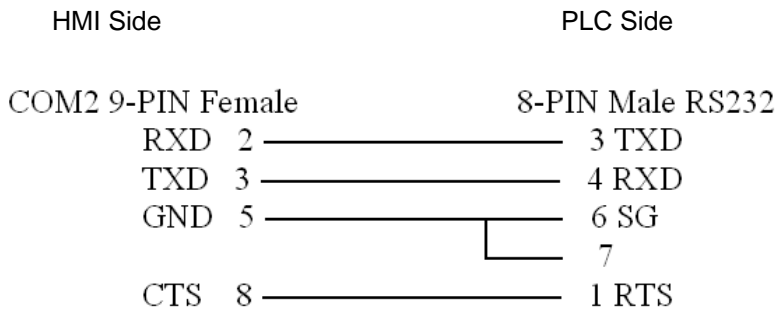
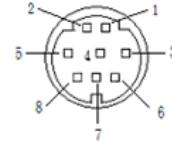
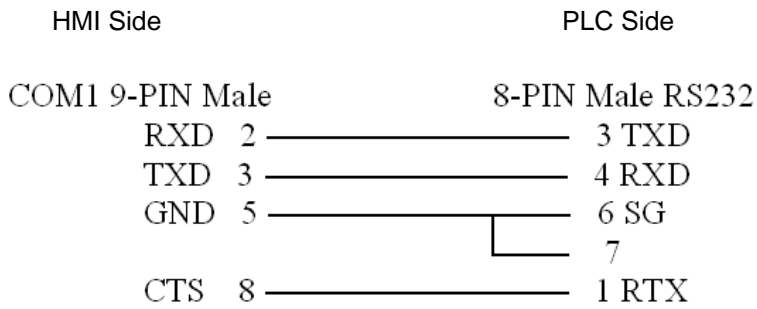
(b) 現在請選擇協議“Maintenance Protocol”，這是對於 IDEC FA4C/FA5C PLC 使用的標準通訊。



(c) 如果你希望更改通訊格式，點選“Configure”按鈕來設定。

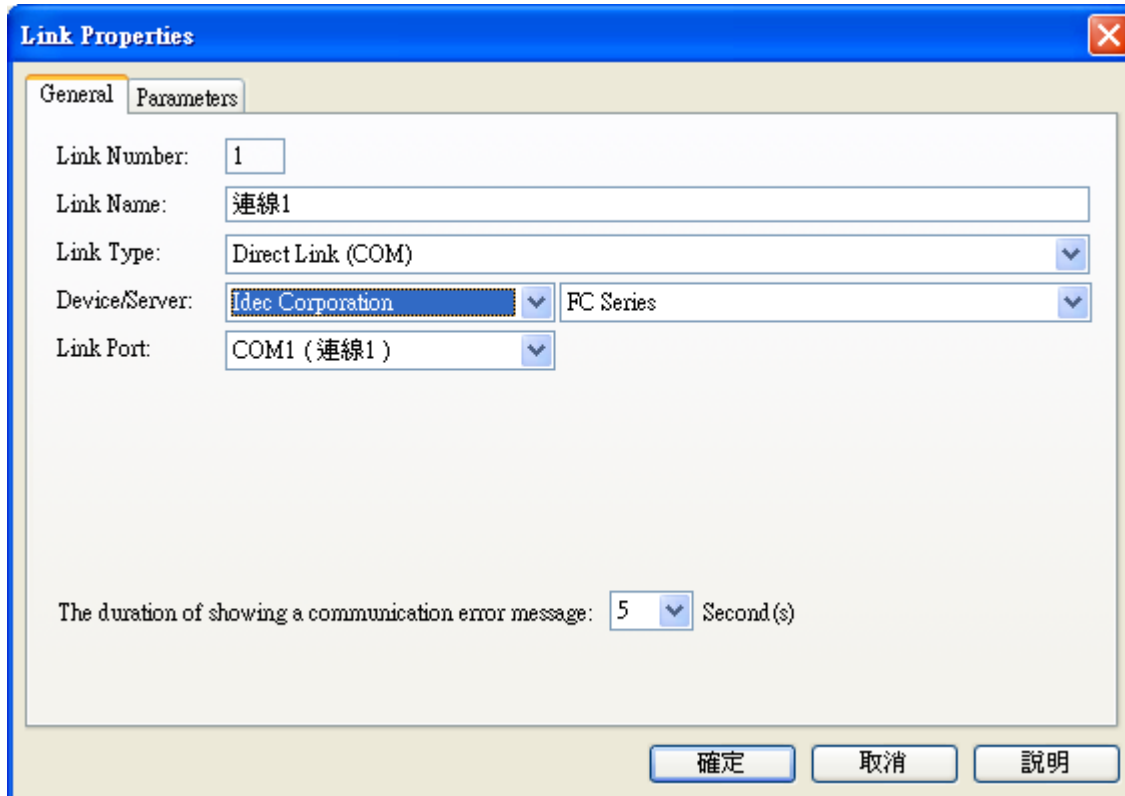


接線圖



(2) HMI 設定:

選擇【Device/Server： Idec Corporation→ FC Series】



Link Properties

General Parameters

Link Number: 1

Link Name: 連線1

Link Type: Direct Link (COM)

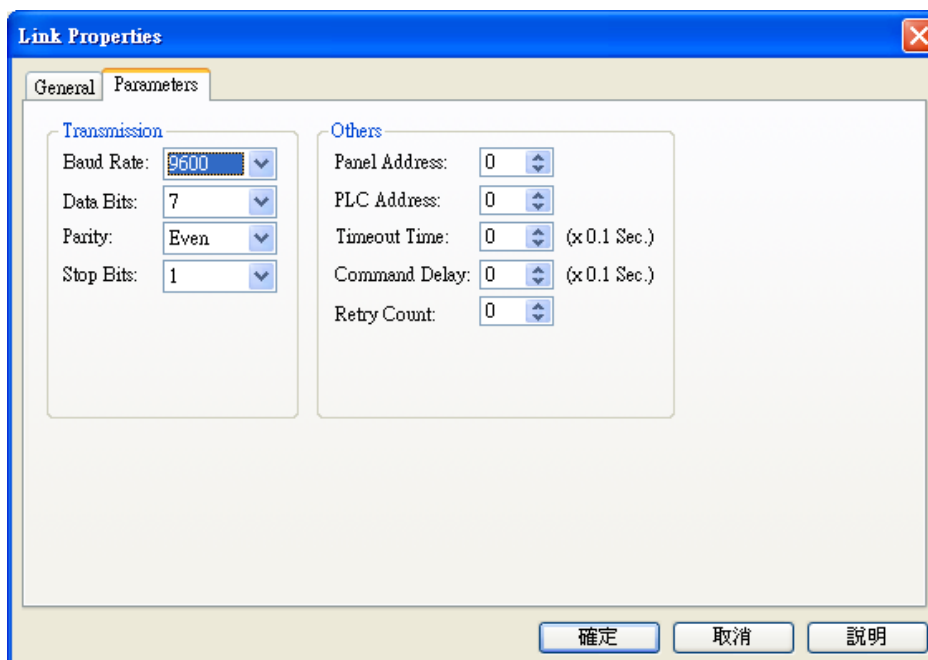
Device/Server: Idec Corporation FC Series

Link Port: COM1 (連線1)

The duration of showing a communication error message: 5 Second(s)

確定 取消 說明

將 HMI link port 參數與 PLC communication 參數設定為相同。



Link Properties

General Parameters

Transmission

Baud Rate: 9600

Data Bits: 7

Parity: Even

Stop Bits: 1

Others

Panel Address: 0

PLC Address: 0

Timeout Time: 0 (x0.1 Sec.)

Command Delay: 0 (x0.1 Sec.)

Retry Count: 0

確定 取消 說明

(3) PLC 記憶體位址

Bit Devices:

Bit Device	Address Range	Block Addr...	Comi
I n b	n: 0~62; b: 0~7	b=0	
Q n b	n: 0~62; b: 0~7	b=0	
M n b	n: 0~255; b: 0~7	b=0	
SM n b	n: 800~831; b: 0~7	b=0	
R n	n: 0~255	b=0	

Close

Word Devices:

Word Device	Address Range	Size	Comment
I W n	n: 0~62	Byte	
Q W n	n: 0~62	Byte	
M W n	n: 0~255	Byte	
SM W n	n: 800~831	Byte	
R W n	n: 0~255; n=16q	Word	
T n	n: 0~255	Word	
C n	n: 0~255	Word	
D n	n: 0~1999	Word	
ED n	n: 2000~7999	Word	
SD n	n: 8000~8499	Word	
EXD n	n: 10000~49999	Word	

Close

~Thank You~



Technical Support Information

中國大陸 QQ 專線：800014850

www.panelmaster.com.cn / www.cermate.com

資料下載專區 <ftp://mail.cermate.com> + User name + Password (欲加入會員需要申請)

合作貼牌聯絡專線：China: 0910011916 / 86-13823788405 sunny@cermate.com

Taiwan: 886-910011915 Kevin@cermate.com

Worldwide: 886-910011914 Linda@cermate.com

Cermate Technologies (Shanghai) Inc. 屏通科技(上海)有限公司

Phone: +86-21-51758590~2

FAX : +86-21-51758589

E-mail: service01.sh@cermate.com

Shenzhen Cermate Technologies Inc. 屏通科技(深圳)有限公司

Phone: +86-755-83562179,

FAX : +86-755-83562294

E-mail: sa-cermate@cermate.com

Cermate Technologies Inc. (台灣) 屏通科技股份有限公司

7F-1, No. 168, Lien-Cheng Road, Chung-Ho City, Taipei, Taiwan 235 R.O.C.

Phone: 886-2-22437000

FAX : 886-2-22499933

E-mail: service@cermate.com