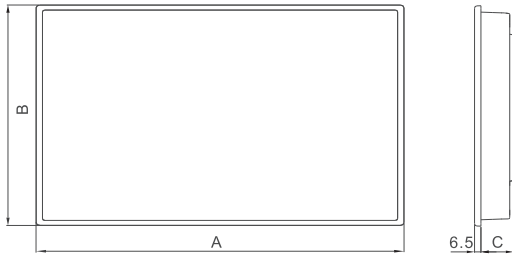
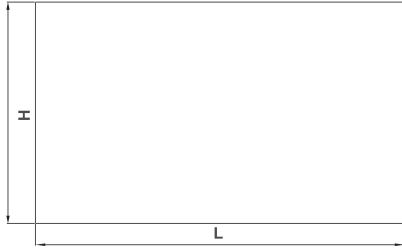


## PT2043-WSP

### Outlet / 外觀尺寸 / 外觀尺寸



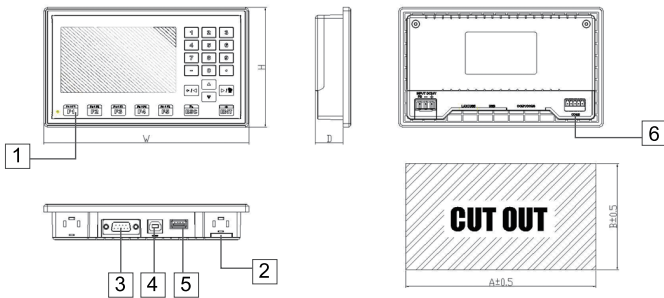
### Cutout / 開孔尺寸 / 開孔尺寸



Model	A	B	C	L	H
PT2043-WSP	172.0mm	102.0mm	30mm	160.5mm	89.5mm

1

### Function View / 功能配置圖 / 功能配置圖



- 1 Front Function Key / 前置功能鍵 / 前置功能鍵
- 2 Power connector / 電源端子 / 電源端子
- 3 COM1/COM3 9Pin Female / COM1/COM3 9Pin母座
- 4 USB Client / USB客端 / USB從接口
- 5 USB Host / USB主端 / USB主接口
- 6 COM2 5Pin(Terminal) / COM2 5Pin(端子台)

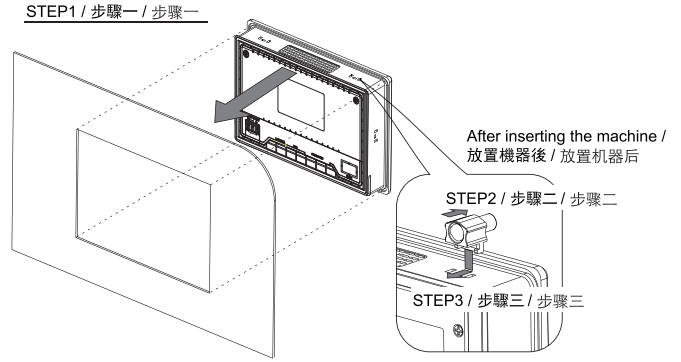
### Pin Assignment of Serial Port / 串口接腳定義 / 串口接腳定義

COM1/COM2/COM3 9Pin Female / COM1/COM2/COM3 9Pin 母座					
Pin	COM1	Pin	COM2	Pin	COM3
1	RS-422 TXD+ / RS-485 D+	1	RS-422 TXD+ / RS-485 D+	7	RS-232 TXD/RS-485 D-
2	RS-232 RXD	2	RS-422 RXD+	8	RS-232 RXD/RS-485 D+
3	RS-232 TXD	3	RS-422 RXD-		
4	RS-422 RXD+	4	RS-422 TXD- / RS-485 D-		
5	SG	5	SG		
6	RS-422 TXD- / RS-485 D-				
9	RS-422 RXD-				

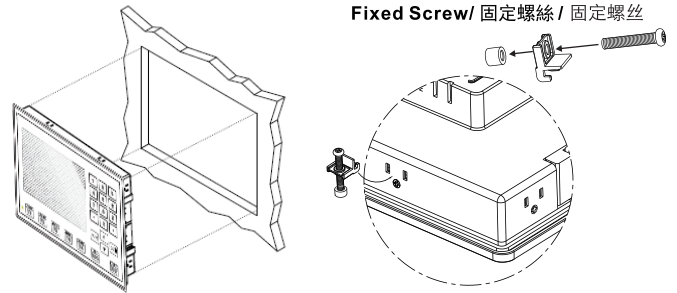
2

### Installation Drawing / 安裝示意圖 / 安裝示意圖

#### Plastic Locks / 塑膠安裝鎖具 / 塑料安裝鎖具



#### Metal Locks / 金屬安裝鎖具 / 金属安装锁具



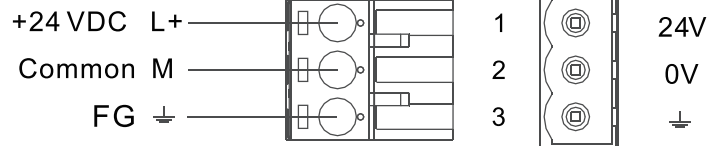
Tighten each fixing screw until the bezel corner gets in contact with the panel.  
使用固定螺絲固定時請注意不要鎖太緊，以避免壓迫造成其他問題 /  
使用固定螺絲固定時請注意不要鎖太緊，以避免壓迫造成其他問題  
Suggested torque for fixing screws: 0.25~0.34Nm /  
固定螺絲扭力建議值: 0.25~0.34Nm / 固定螺絲扭力建議值: 0.25~0.34Nm

3

### Power Supply / 電源供應 / 电源供应



Powered by a Low Voltage / Limited Energy power source.  
以低電壓提供電力/限制能源電源 / 以低电压提供电力/限制能源电源



Do not open the rear cover of the panel when power is applied.  
電源送電時請勿開啟後殼 / 电源送电时请勿开启后壳



Be sure that the power supply has enough power capacity for the operation of the equipment.  
送電時請確定電源設備的電源能力符合產品硬體規範。  
送电时请确定电源设备的电源能力符合产品硬件规范。

### Battery Recycling / 電池處置 / 电池处置

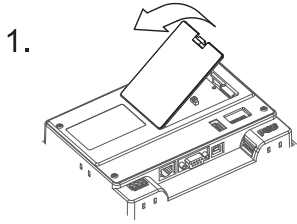


Dispose of batteries according to local regulations.  
廢棄電池的處置請依據使用者所在地區之規範辦理廢棄電池處置方式。  
废弃电池的处置请依据使用者所在地对废弃电池处置方式办理。

4

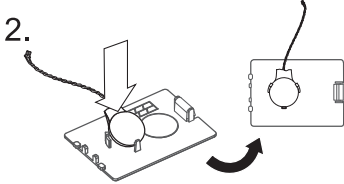
## External Battery Installation /

### 外接電池安裝示意 / 外接電池安裝示意



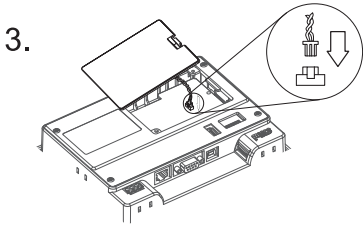
1.

Open the battery cover. /  
掀開電池蓋 / 掀开電池蓋



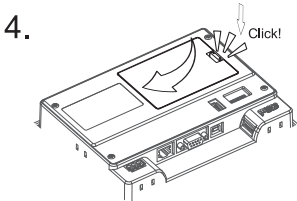
2.

Place the battery in the correct direction  
and fix the external battery on the back  
of battery cover as shown. /  
將外接電池依圖示方向固定於電池蓋  
背後位置 / 將外接電池依圖示方向  
固定于電池蓋背後位置



3.

Plug in the JST PH connector of external  
battery into the socket. /  
將外接電池接頭插入電池插座 /  
將外接電池接頭插入電池插座



4.

Replace the battery cover and press it  
down until it clicks into place. /  
蓋回電池蓋並確認固定即完成 /  
蓋回電池蓋并确认固定即完成

The products have been designed for use in an industrial environment in compliance with the 2014/30/EU directive.

本產品適用於工業環境並符合 2014/30/EU 標準 / 本产品适用于工业环境并符合 2014/30/EU 标准

The products have been designed in compliance with:

本產品符合以下標準: / 本产品符合以下标准:

- EN 61000-6-4: 2007 +A1: 2011
- EN 61000-3-2: 2014
- EN 61000-3-3: 2013
- EN 61000-6-2: 2005 / AC: 2005

IEC 61000-4-2: 2008; IEC 61000-4-3: 2006 + A1: 2007 +A2: 2010;  
IEC 61000-4-4: 2012; IEC 61000-4-5: 2014 + A1: 2017; IEC 61000-4-6: 2013;  
IEC 61000-4-8: 2009; IEC 61000-4-11: 2004 + A1: 2017

The installation of these devices into residential, commercial and light-industrial environments is allowed only special measures are taken in order to get the conformity to IEC-61000-6-3

本產品若要安裝於住宅；商業及輕工業的環境時，必須加測特殊檢驗以符合 IEC-61000-6-3 / 本产品若要安装于住宅；商业及轻工业的环境时，必须加测特殊检验以符合 IEC-61000-6-3

Reproduction of the contents of this copyrighted document, in whole or part without written permission of Cermate Technologies Inc., is prohibited.

本文件內容版權為Cermate Technologies Inc.所有，非經本公司同意，請勿自行重製、拷貝或修正文件內容 / 本文件内容版权为Cermate Technologies Inc.所有，非经本公司同意，请勿自行重制、拷贝或修正文件内容